

Be Sure...

BUY SEEBURG!

AN IMPORTANT MESSAGE TO MUSIC OPERATORS

In presenting the new SEEBURG MUSIC SYSTEMS, consideration was given to the obsolescence of the operator's present equipment.

The new SEEBURG SYMPHONOLA has been designed to operate with SEEBURG prewar WIRELESS WALLOMATICS and 3-WIRE WALLOMATICS. The new SEEBURG WIRELESS WALLOMATICS and SEEBURG 3-WIRE WALLOMATICS have been designed to operate with SEEBURG prewar REMOTE CONTROL SYMPHONOLAS.

Fully realizing the tremendous demand for new equipment . . . at the same time the substantial investment required by the operator to replace all of his old equipment . . . the new 1946 SEEBURG MUSIC SYSTEMS will enable the operator to gradually and orderly replace his old equipment, as his investment will permit.

SEEBURG operators can replace their prewar SEEBURG MUSIC SYSTEMS with approximately 40% less cash investment than would be required if complete, immediate replacement (both phonograph and wall boxes) were necessary.

BETTER MECHANISM

The untried mechanisms of today . . . may be the "orphans" of tomorrow! Vastly improved with fewer moving parts and greater efficiency . . . the operating principle of the DEPENDABLE SEEBURG MECHANISM . . . which has proved its reliability for many years and particularly during the war years . . . has been retained as the "HEART" of the SEEBURG MUSIC SYSTEMS.

The new simplified circuits of the WIRELESS and WIRED REMOTE CONTROL WALLOMATICS incorporate the very latest developments in electronic science. The new 1946 WALLOMATICS are interchangeable with prewar models.

BETTER LISTENING

Acoustically correct SOUND DISTRIBUTION for better listening . . . another SEEBURG "FIRST" . . . heralds the introduction of the new 1946 SEEBURG MUSIC SYSTEMS. The many advanced new features of the phonograph chassis, combined with the ingenious use of a separate REMOTE SOUND AMPLIFIER with MATCHED IMPEDENCE SEEBURG EXTERNAL SPEAKERS . . . enables the SEEBURG MUSIC OPERATOR to offer all locations, regardless of size . . . "customized" SOUND DISTRIBUTION.

SEEBURG engineers have developed every component part of SEEBURG MUSIC SYSTEMS to efficiently distribute music to all parts of a location so that the patrons are literally "surrounded by music" at a scientifically predetermined volume.

BETTER STYLING

It's so different! So unusually beautiful! So outstandingly attractive! Unmarred by the antiquated illuminated garishness that characterized automatic phonographs of the past . . . the "1-46" SEEBURG SYMPHONOLA is truly a masterpiece of illuminated, modern cabinet design!

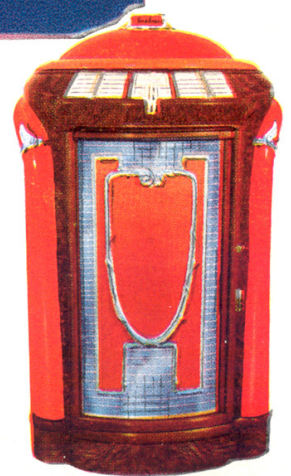
BETTER BUY . . . SEEBURG



Seeburg Symphonola "1-46"

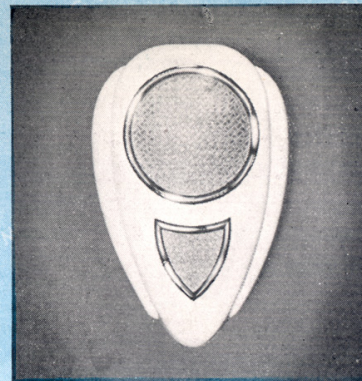
The modernity of the SEEBURG SYMPHONOLA "1-46" is emphasized by the illuminated, chrome trimmed plastic dome and the illuminated "PUSH-A-TUNE" ELECTRIC SELECTION panel. The illuminated tapered and rounded pilasters follow the lines of the cabinet. The door is trimmed with chrome and blue mirror imposed on red grille cloth. From the base of the streamlined semi-rounded cabinet to the illuminated top . . . there are no protruding parts.

MODEL 146 S . . . is the SYMPHONOLA with phonograph with electric selector • MODEL 146 M . . . is the SYMPHONOLA with electric selection receiver equipped for wireless and 3-wire remote control • MODEL 146 W . . . is the SYMPHONOLA with electric selection receiver equipped for 3-wire remote control • SIZE: Height 57", Width 34½", Depth 27¼" • WEIGHT: MODEL 146 S, UNCRATED 327 LB.; CRATED, 403 LB. • WEIGHT: MODEL 146 M, UNCRATED 343 LB.; CRATED 419 LB. • WEIGHT: MODEL 146 W, UNCRATED 345 LB.; CRATED 421 LB.



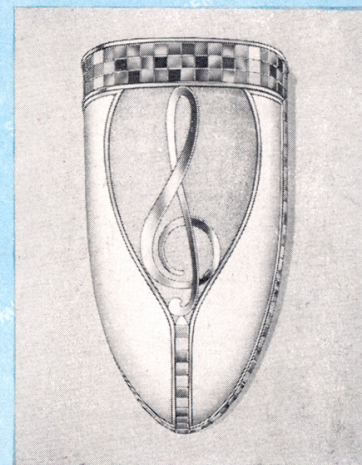
The "Tear Drop" Speaker

The "TEAR DROP" design SPEAKER is an 8-inch speaker . . . ivory baked lacquer finish . . . plastic housing with attractive chrome trim. Available for external and recessed installations . . . with or without individual speaker volume control.



The "Mirror" Speaker

A 12-inch SPEAKER. The plastic housing has an ivory baked lacquer finish . . . beautifully trimmed with blue mirror and chrome. A large, attractive chrome cleft with "wavy" chrome strips is imposed on the grille opening. The MIRROR SPEAKER is light and durable. Available for external and recessed installation . . . with or without individual speaker volume control.



Seeburg Remote Control Special

A cabinet enclosed mechanism . . . 20 selections . . . the DEPENDABLE SEEBURG MECHANISM . . . adaptable for either WIRELESS or 3-WIRE REMOTE CONTROL MUSIC SYSTEMS

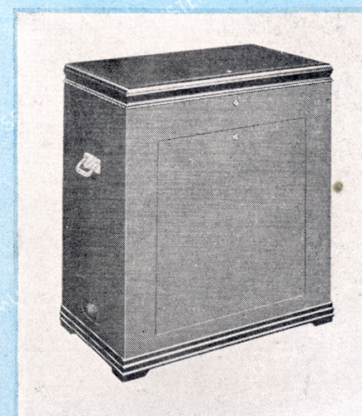
MODEL H-146-W . . . is the hidden REMOTE CONTROL SPECIAL mechanism equipped for 3-WIRE REMOTE CONTROL.

MODEL H-146-M . . . is the hidden REMOTE CONTROL SPECIAL mechanism equipped for WIRELESS and 3-WIRE REMOTE CONTROL.

SIZE: Height 37½", Width 31¼", Depth 18½".

WEIGHT: MODEL H-146-W, Uncrated 219 lb.; Crated 255 lb.

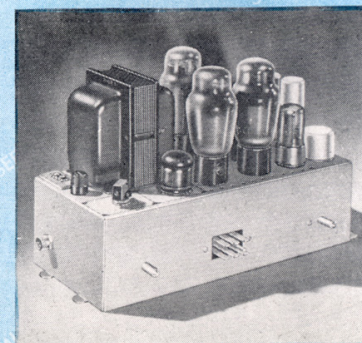
WEIGHT: MODEL H-146-M, Uncrated 216 lb.; Crated 252 lb.



Remote Speaker Amplifier

Type RSA1-L6

AUXILIARY AMPLIFIER to supply audio power to SEEBURG IMPEDENCE MATCHED REMOTE SPEAKERS. Simple two terminal connectors for speaker wiring. 18 watts maximum undistorted push-pull output. Bass and volume control independent of MASTER AMPLIFIER. Designed for optional use of REMOTE VOLUME CONTROL. Plug on side of REMOTE SPEAKER AMPLIFIER obtains power and signal from MASTER AMPLIFIER SOCKET. Separable connector and locating pins facilitate quick and easy installation or removal.



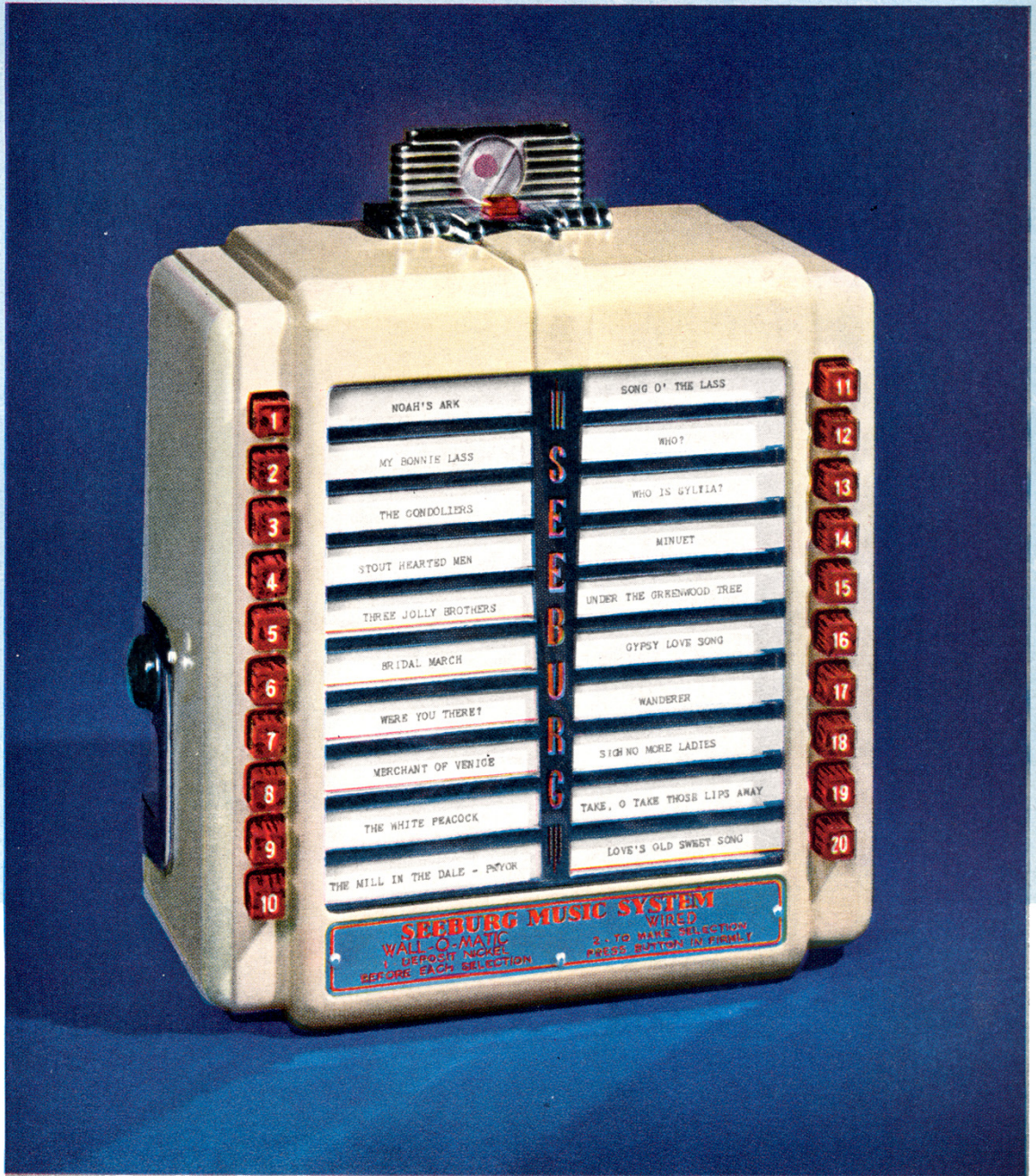


Seeburg Wireless Wallomatic

No wire or cable attachments from the WALLOMATIC to the SYMPHONOLA . . . just plug in the lighting circuit . . . The SEEBURG WIRELESS WALLOMATIC is easily installed . . . three screws securely hold back plate and chassis to the wall. By unlocking the front cover, the entire mechanism is readily accessible and the coin chute and ejector mechanism . . . all one assembly . . . is serviced by simply removing one screw. New cheatproof precautions have been included.

The non-breakable streamlined chrome-baked enamel trimmed case is smaller in size . . . and is beautifully illuminated through the program holder by uniform lighting in the rear of the chrome-framed title strips. The red translucent Tenite selection buttons have white enameled engraved numbers for easy reading. 110 volts, 60 cycle operation.

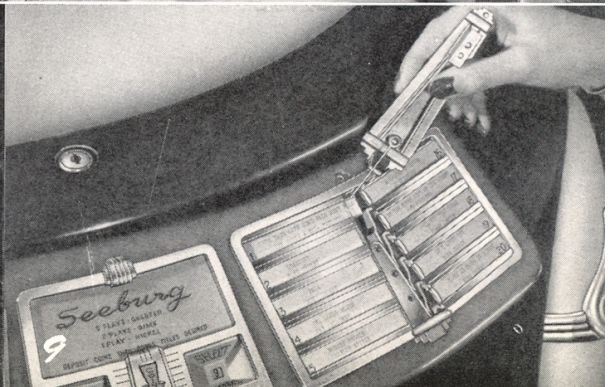
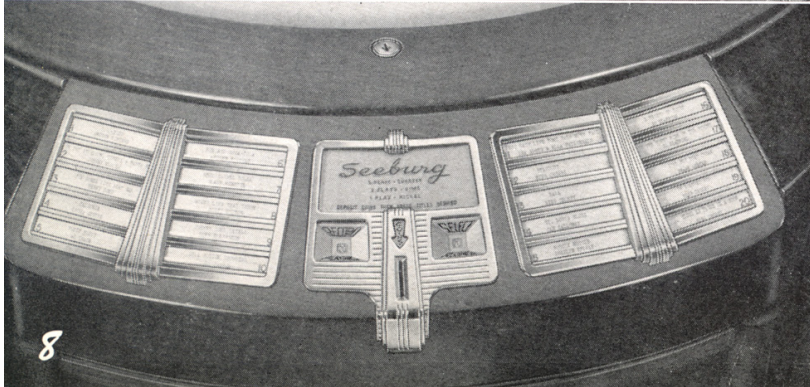
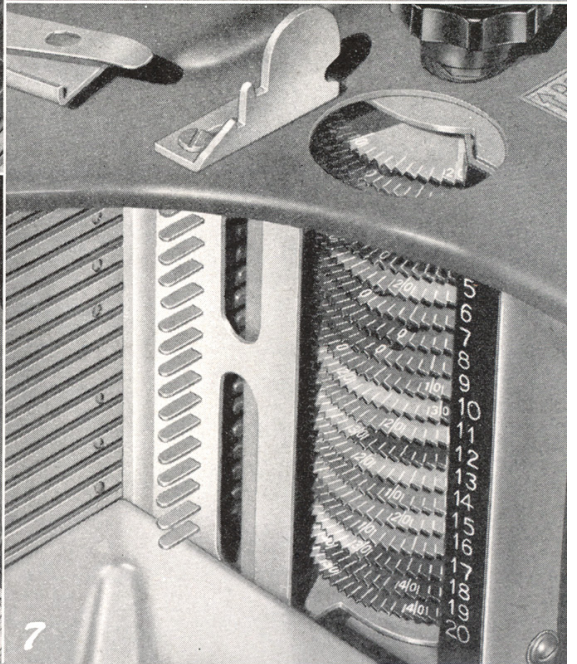
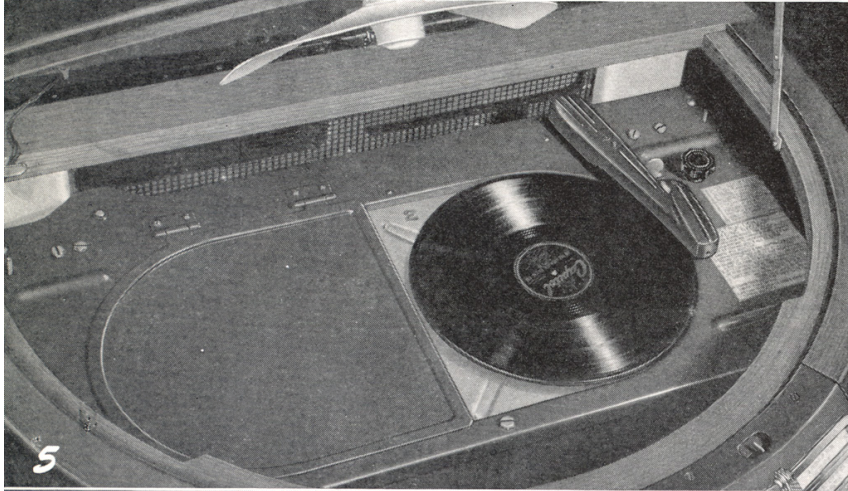
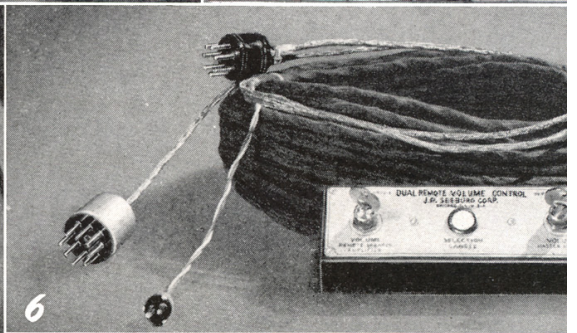
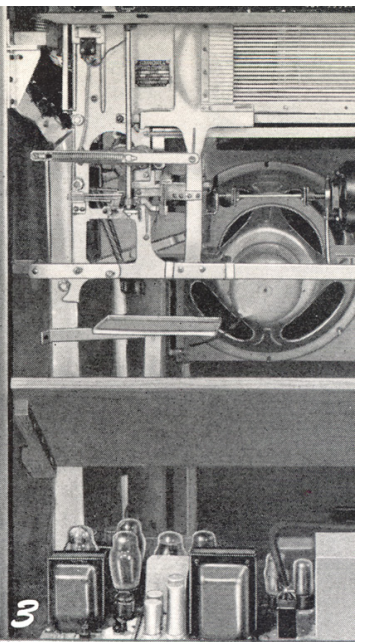
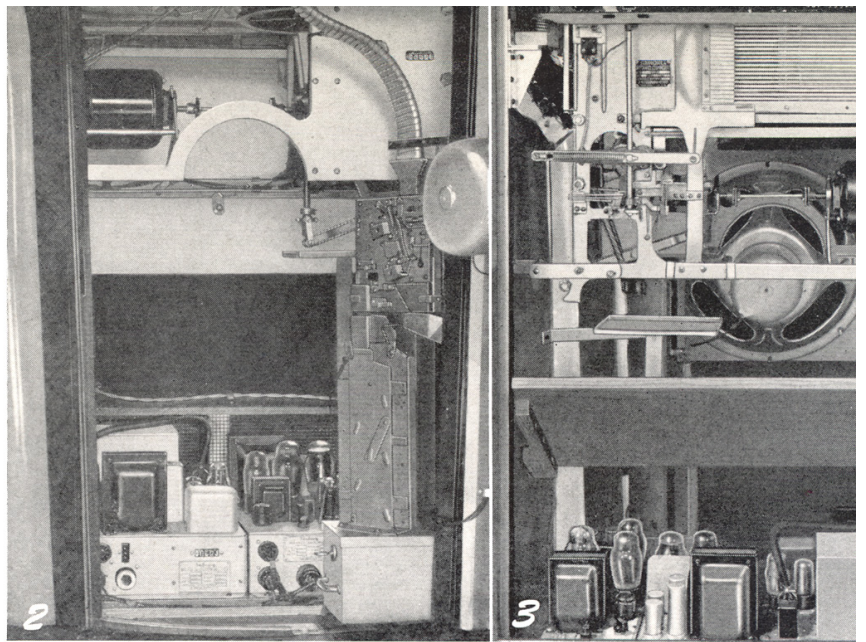
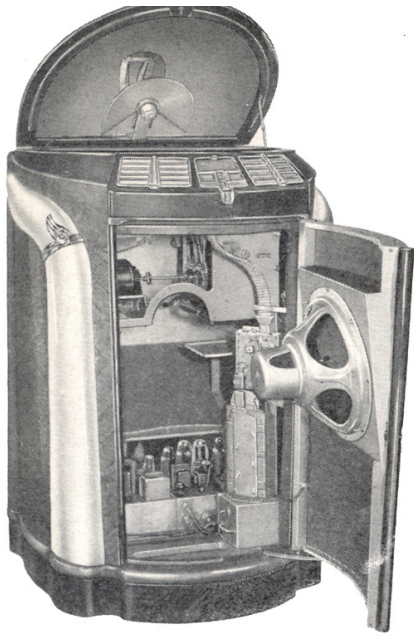
Size: Height 10", Width 8½", Depth 4", Weight: 16 lb. Boxed Weight: 17½ lb.



Seeburg 3-Wire Wallomatic

It's compact! A modern streamlined non-breakable case. The new program holder is evenly illuminated. Attractive chrome trim frames each title. The square selection buttons are red translucent Tenite with white enameled engraved numbers. The entire mechanism is readily accessible by unlocking the front of the case. The ejector mechanism and the coin chute is one assembly and is easily serviced by removing a single screw. The SEEBURG 3-WIRE WALLOMATIC operates on 24 volts and lends itself to easy installation. Only three screws are required to mount the back plate.

Size: Height 8 $\frac{7}{8}$ " , Width 8 $\frac{1}{2}$ " , Depth 4 $\frac{3}{16}$ ". Weight: 14 lb. Boxed Weight: 15 lb.



1. Open View

Ready accessibility for efficient servicing. This view emphasizes the scientifically tilted 15-inch speaker that provides EAR LEVEL SOUND DISTRIBUTION.

2. Front View

Notice the ALUMINIUM COIN RUNWAY, the accessibility of the coin chute SLUGPROOF MECHANISM and the ENLARGED COIN BOX. The TOP METER registers total phonograph plays. The METER in MASTER SELECTION RECEIVER registers the total of all coins deposited in WALLOMATICS and SYMPHONOLA.

3. Rear Views

Notice the absence of wires, adapters and other im-provisions . . . the SEEBURG MUSIC SYSTEM is de-signed specifically as a REMOTE CONTROL INSTRU-MENT. This rear view shows the DEPENDABLE SEE-BURG MECHANISM . . . the ELECTRO MAGNETIC TRIPOFF . . . NEW MOTOR MOUNTING . . . the NEW CYLINDRICAL HELIX . . . DEFLECTING HEAT BAFFLE . . . the COMPACT MASTER ELECTRONIC REMOTE CONTROL ASSEMBLY.

4 & 5. Top Views

These views show the new single-hinged LIGHTWEIGHT ILLUMINATED PLASTIC DOME . . . convenience of changing records . . . the DUSTPROOF RECORD PRO-TECTOR (open and closed) . . . the streamlined TONE ARM ASSEMBLY and LIGHTWEIGHT P. N. CRYSTAL CARTRIDGE PICKUP—one ounce needle pressure.

6. Dual Remote Volume Control Unit

This unit performs three definite functions: (1) Positive control of the speaker in the SYMPHONOLA; (2) Positive control of all REMOTE SPEAKERS; (3) Cancels records from a remote point.

7. Popularity Meter

POPULARITY METER indicates popularity of each record by contrasting colored discs which are visible from a distance.

8. Push-A-Tune Electric Selector

The chrome trimmed PUSH-A-TUNE ILLUMINATED ELECTRIC SELECTOR harmonizes with the ultra modern design of the SYMPHONOLA cabinet. There are no protruding parts. Uniform lighting and the magnifying qualities of the title strip covers combine for easy reading. PUSH-A-TUNE SELECTION is made by simply pressing on the individual title strip. SINGLE DROP NICKEL, DIME AND QUARTER COIN CHUTE. An ILLUMINATED RED ARROW points to the coin chute opening. The instructions, the RECORD CREDIT DIAL and RECORD PLAYING DIAL are easily read because of excellent lighting.

9. Changing Title Strips

The title strips are easily and quickly changed by a rubber tipped wire loop which folds under a chrome component part of the PUSH-A-TUNE ILLUMINATED ELECTRIC SELECTOR.

*Location Performance,
Over A Period Of
Years, Has Proved
The Operating Efficiency
Of*

Seeburg

DEPENDABLE MECHANISMS

1902

J. P. SEEBURG CORPORATION • CHICAGO

1946